

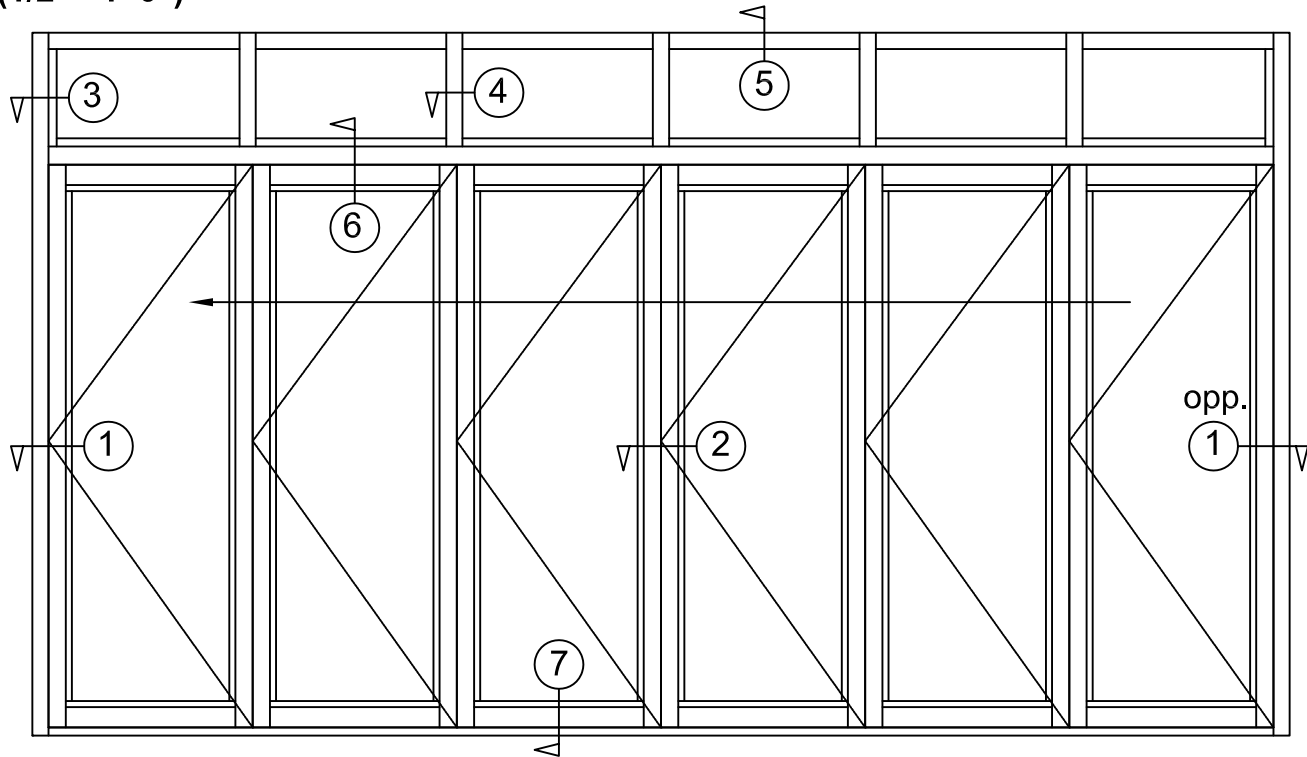


PORTAL INC.

10 TRACY DRIVE- AVON, MA. 02322

TYPICAL MANUAL BI-FOLD ENTRANCE ELEVATION:

(1/2" = 1'-0")



SPECIFICATIONS FOR STANDARD DOORS AND FRAMES

Portal doors shall be constructed of extruded aluminum shapes for stiles and rails. All aluminum shall be 6063-T5 with all exposed surfaces given a #204 R1 clear anodized finish or #313 dark bronze anodized finish. several standard painted finishes available also. Wall thickness of stiles and rails shall be a minimum of $\frac{1}{8}$ ". the door thickness shall be $1\frac{3}{4}$ ". Stiles and rails shall be bolted and electric arc welded to heavy anchors at all four corners. Meeting stiles of all pairs of doors shall be weather-stripped. All center pivoting doors shall be weather-stripped on lock and pivot stiles. all glazing beads shall have neoprene inserts for clean, puttyless snap in glazing.

Exterior glazing beads shall be non removable. Butt hinged doors shall be furnished with $\frac{1}{4}$ " aluminum hinge reinforcing plates. All standard doors to be furnished with standard push-pull hardware, maximum security lock and adjustable door leveling screw for minimum clearance adjustments.

Frames shall be constructed of seamless extruded aluminum tubes of 6063-T5 with anodized or standard painted surface. The basic shapes shall measure $1\frac{3}{4}$ " x $4\frac{1}{2}$ ". Frames for offset hung doors shall be furnished with $\frac{1}{4}$ " aluminum hinge reinforcement plates and weather-stripped doorstops.

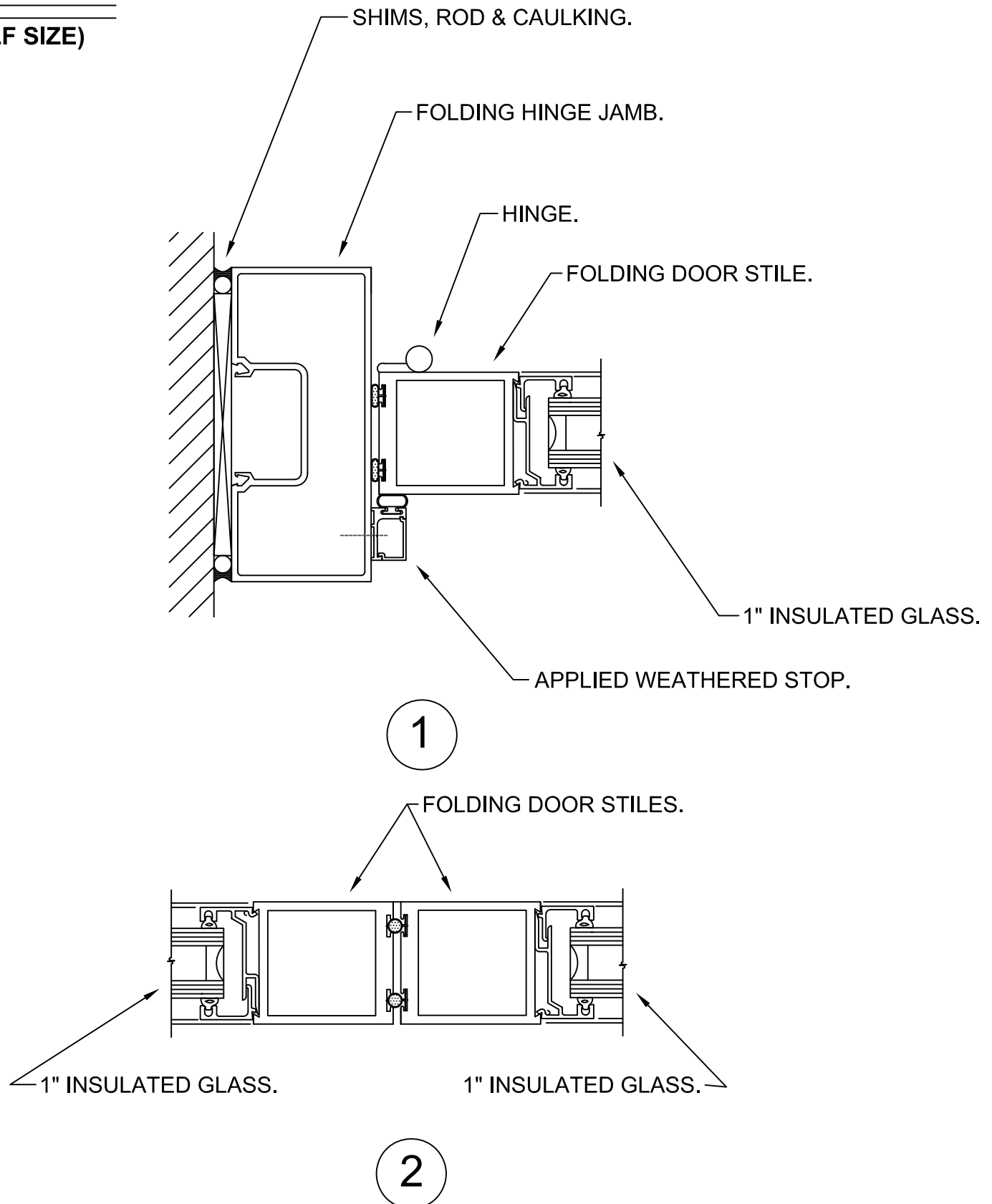


PORTAL INC.

10 TRACY DRIVE- AVON, MA. 02322

DETAILS:

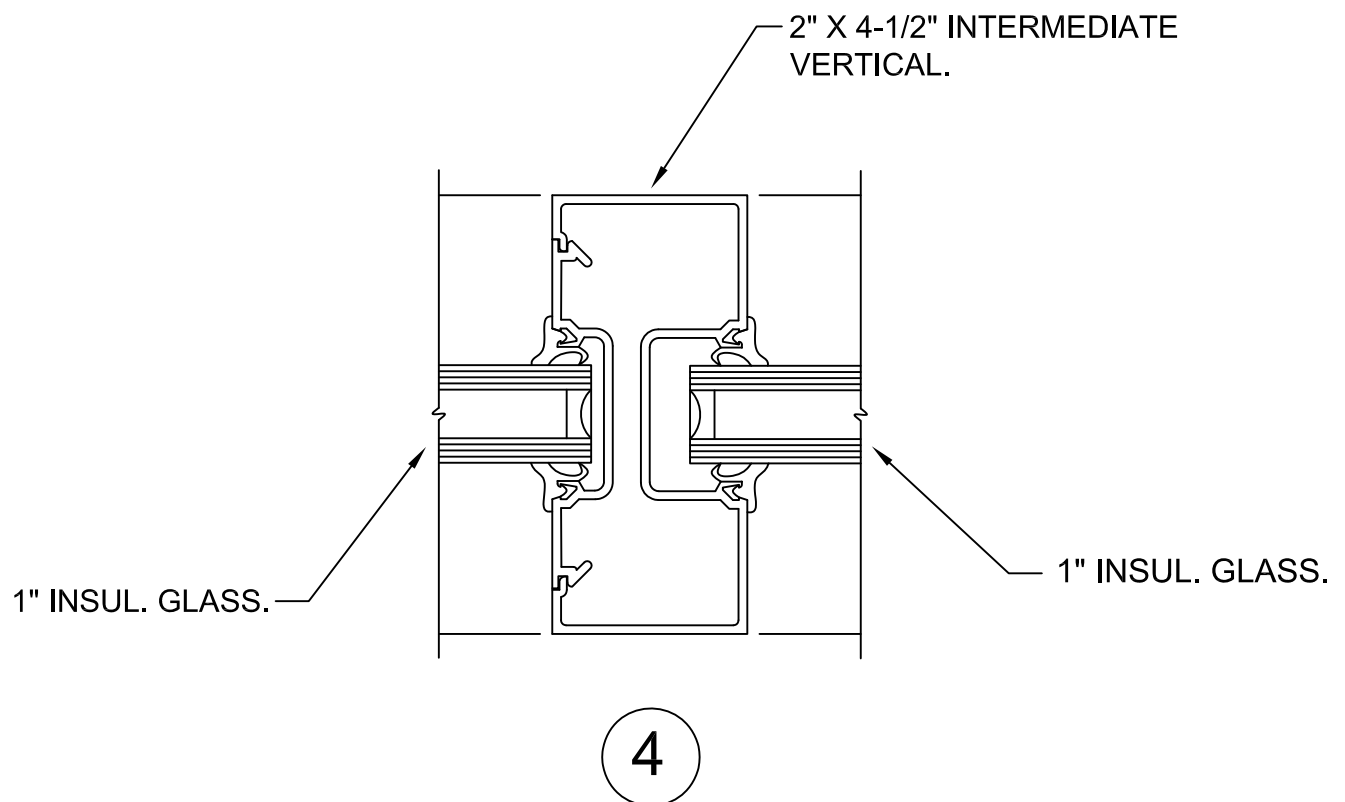
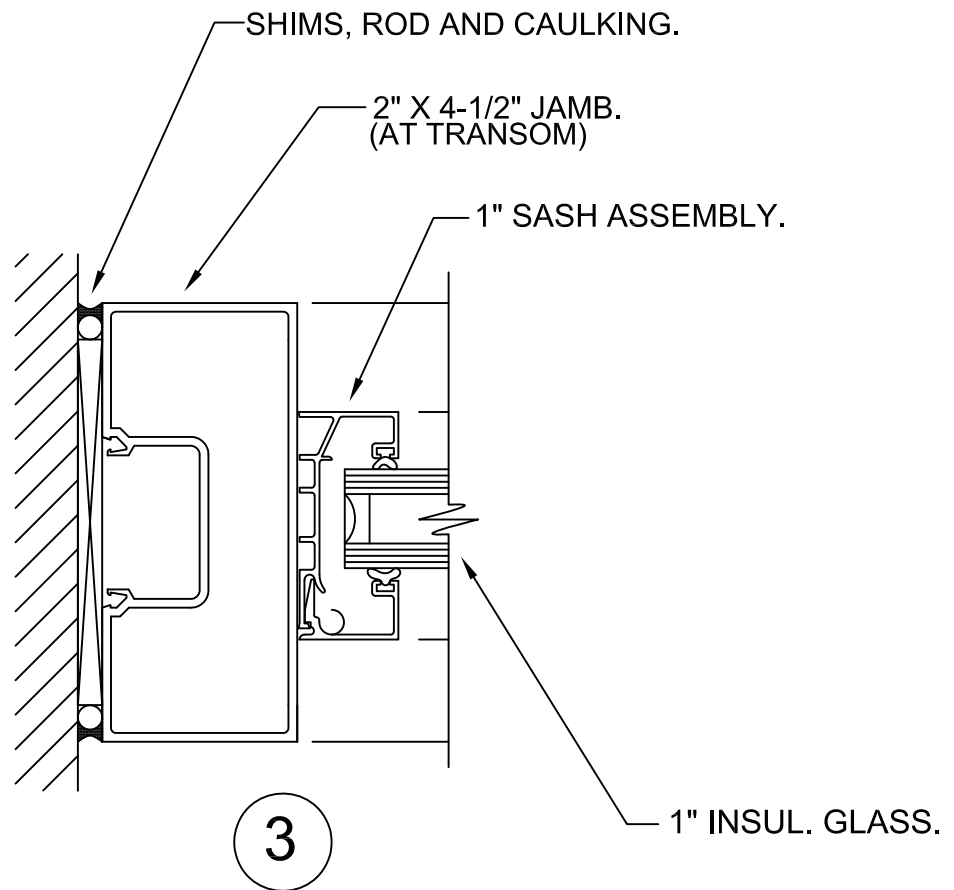
(HALF SIZE)

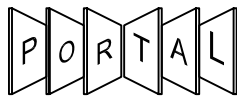




PORTAL INC.

10 TRACY DRIVE- AVON, MA. 02322

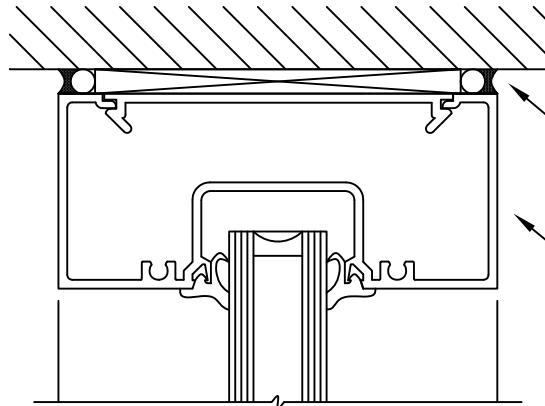




PORTAL INC.

10 TRACY DRIVE- AVON, MA. 02322

5

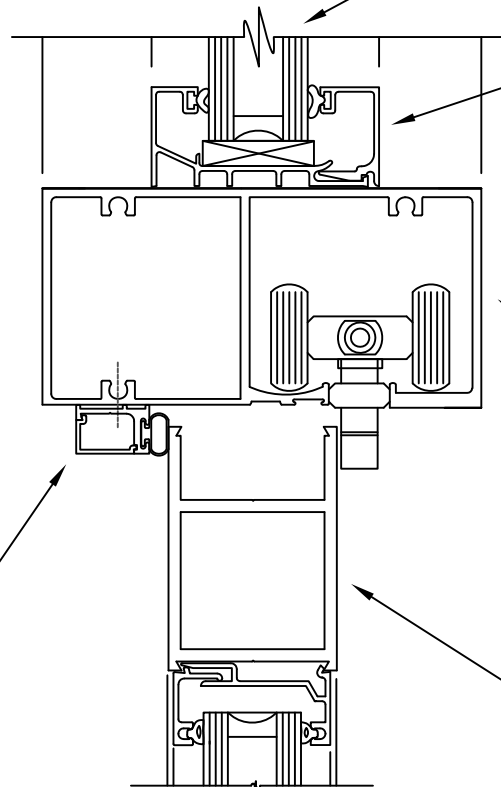


SHIMS, ROD & CAULKING.

2" X 4-1/2" HEADER.

1" INSULATED GLASS.

6



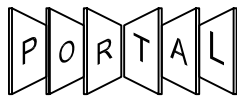
APPLIED GLAZING SASH.

TOP HUNG ROLLER
TRACK ASSEMBLY.

APPLIED
WEATHERED
STOP.

TOP RAIL OF DOOR / WINDOW.

1" INSULATED GLASS.



PORTAL INC.

10 TRACY DRIVE- AVON, MA. 02322

ALTERNATE

6

APPLIED
WEATHERED
STOP.

SHIMS, ROD & CAULKING.

TOP HUNG ROLLER
TRACK ASSEMBLY.

TOP RAIL OF DOOR.

1" INSULATED GLASS.

BOTTOM RAIL OF DOOR.

BI-FOLD PIVOT.

GUIDE THRESHOLD.

7

